

National Testing Agency

Question Paper Name : CMAT 25th Jan 2025 Shift 1
Subject Name : CMAT
Creation Date : 2025-01-25 16:56:57
Duration : 180
Total Marks : 400
Display Marks: Yes

CMAT

Group Number : 1
Group Id : 5310021
Group Maximum Duration : 0
Group Minimum Duration : 180
Show Attended Group? : No
Edit Attended Group? : No
Break time : 0
Group Marks : 400

Quantitative Techniques and Data Interpretation

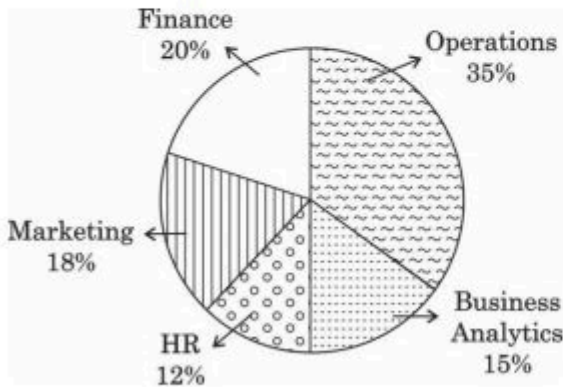
Section Id : 5310021
Section Number : 1
Section type : Online
Mandatory or Optional : Mandatory
Number of Questions : 18
Number of Questions to be attempted : 18
Section Marks : 80
Maximum Instruction Time : 0
Sub-Section Number : 1
Sub-Section Id : 5310021
Question Shuffling Allowed : No

Question Id : 5310021 Question Type : COMPREHENSION Sub Question Shuffling Allowed : Yes
Group Comprehension Questions : No Question Pattern Type : NonMatrix
Question Numbers : (1 to 3)

Study the given pie charts carefully to answer the questions that follows.

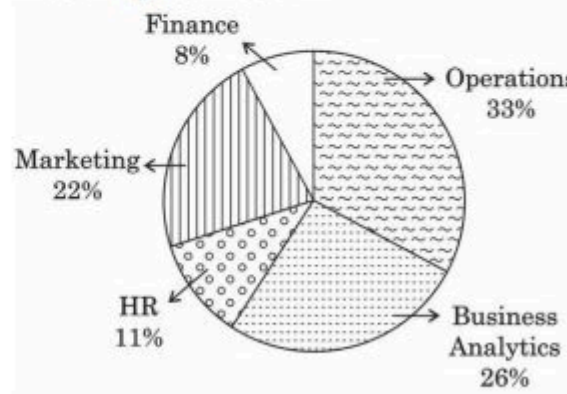
Break up of number of students studying in different specialization of management college and the number of students who recently got placed in each specialization.

Break up of students studying in different specializations



Total number of students = 3600

Breakup of students who recently got placed in each specialization



Total number of students placed = 1200

Sub questions

Question Number : 1 Question Id : 5310022 Question Type : MCQ Option Shuffling : No Display

Question Number : Yes Is Question Mandatory : No

Correct Marks : 4 Wrong Marks : 1

The number of students who got placed from the HR specialization was what percent of the total number of students studying in that specialization?

- | | |
|------------|------------|
| (1) 36.18% | (2) 30.56% |
| (3) 47.22% | (4) 28.16% |

Options :

- 5310021. 1
- 5310022. 2
- 5310023. 3
- 5310024. 4

Question Number : 2 Question Id : 5310023 Question Type : MCQ Option Shuffling : No Display

Question Number : Yes Is Question Mandatory : No

Correct Marks : 4 Wrong Marks : 1

The total number of students who got placed from all the specialization together was what percentage of total number of students pursuing specialization in operations, marketing and finance collectively?

- | | |
|------------|------------|
| (1) 43.21% | (2) 44.89% |
| (3) 45.66% | (4) 46.22% |

Options :

5310025. 1
5310026. 2
5310027. 3
5310028. 4

Question Number : 3 Question Id : 5310024 Question Type : MCQ Option Shuffling : No Display Question Number : Yes Is Question Mandatory : No Correct Marks : 4 Wrong Marks : 1

What is the difference between the total number of students pursuing specialization in Business Analytics and HR combined and the number of student who got placed from marketing specialization and finance specialization combined?

- (1) 812 (2) 972
(3) 582 (4) 612

Options :

5310029. 1
53100210. 2
53100211. 3
53100212. 4

Sub-Section Number : 2
Sub-Section Id : 5310022
Question Shuffling Allowed : Yes

Question Number : 4 Question Id : 5310025 Question Type : MCQ Option Shuffling : No Display Question Number : Yes Is Question Mandatory : No Correct Marks : 4 Wrong Marks : 1

Reema had 'n' chocolates. She distributed them among 4 children in the ratio of $\frac{1}{2} : \frac{1}{3} : \frac{1}{5} : \frac{1}{8}$. If she gave them each one a complete chocolate, the minimum number of chocolates she had distributed.

- (1) 120 (2) 139
(3) 240 (4) 278

Options :

53100213. 1
53100214. 2
53100215. 3
53100216. 4

Question Number : 5 Question Id : 5310026 Question Type : MCQ Option Shuffling : No Display Question Number : Yes Is Question Mandatory : No Correct Marks : 4 Wrong Marks : 1

A vegetable vendor by means of his false balance defrauds to the extent of 10% in buying goods and also defrauds to 10% in selling, then the gain percent is

- (1) $11\frac{1}{9}\%$ (2) 10%
(3) $22\frac{2}{9}\%$ (4) 20%

Options :

53100217. 1
53100218. 2
53100219. 3
53100220. 4

Question Number : 6 Question Id : 5310027 Question Type : MCQ Option Shuffling : No Display Question Number : Yes Is Question Mandatory : No Correct Marks : 4 Wrong Marks : 1

Arrange the following in descending order.

- (A) $\sqrt{3} - \sqrt{2}$
(B) $\sqrt{4} - \sqrt{3}$
(C) $\sqrt{5} - \sqrt{4}$
(D) $\sqrt{2} - 1$

Choose the correct answer from the options given below :

- (1) $A > B > C > D$
(2) $D > C > B > A$
(3) $D > A > B > C$
(4) $A > C > B > D$

Options :

53100221. 1
53100222. 2
53100223. 3
53100224. 4

Question Number : 7 Question Id : 5310028 Question Type : MCQ Option Shuffling : No Display Question Number : Yes Is Question Mandatory : No Correct Marks : 4 Wrong Marks : 1

There are three bottles of mixture of syrup and water in the ratios 2 : 3, 3 : 4 and 7 : 5. 10 litres of first and 21 litres of second bottles are taken. How much quantity of mixtures from third bottle is to be taken so that the final syrup and water ratio of mixture from three bottles will be 1 : 1 if the final mixture from all the three bottles is added and mixed in a big container?

- (1) 20 litres (2) 25 litres
(3) 30 litres (4) 35 litres

Options :

53100225. 1
53100226. 2
53100227. 3
53100228. 4

Question Number : 8 Question Id : 5310029 Question Type : MCQ Option Shuffling : No Display Question Number : Yes Is Question Mandatory : No

Correct Marks : 4 Wrong Marks : 1

A fair coin is tossed repeatedly. If tail appears on first four tosses, then the probability of head appearing on fifth toss equals.

- (1) $\frac{5}{12}$ (2) $\frac{1}{2}$
(3) $\frac{5}{6}$ (4) $\frac{1}{6}$

Options :

53100229. 1
53100230. 2
53100231. 3
53100232. 4

Question Number : 9 Question Id : 53100210 Question Type : MCQ Option Shuffling : No Display Question Number : Yes Is Question Mandatory : No

Correct Marks : 4 Wrong Marks : 1

Given below are two statements :

Statement I : The perimeter of a triangle is greater than the sum of its three medians.

Statement II : In any triangle ABC, if D is any point on BC, then $AB + BC + CA > 2AD$.

In the light of the above statements, choose the correct answer from the options given below :

- (1) Both Statement I and Statement II are true
- (2) Both Statement I and Statement II are false
- (3) Statement I is true but Statement II is false
- (4) Statement I is false but Statement II is true

Options :

- 53100233. 1
- 53100234. 2
- 53100235. 3
- 53100236. 4

Question Number : 10 Question Id : 53100211 Question Type : MCQ Option Shuffling : No Display Question Number : Yes Is Question Mandatory : No

Correct Marks : 4 Wrong Marks : 1

Match List I with List II :

List I (Quadratic equations)	List II (Roots)
(A) $12x^2 - 7x + 1 = 0$	(I) $(-13, -4)$
(B) $20x^2 - 9x + 1 = 0$	(II) $\left(\frac{1}{3}, \frac{1}{4}\right)$
(C) $x^2 + 17x + 52 = 0$	(III) $\left(-4, \frac{-3}{2}\right)$
(D) $2x^2 + 11x + 12 = 0$	(IV) $\left(\frac{1}{5}, \frac{1}{4}\right)$

Choose the correct answer from the options given below :

- (1) (A)-(II), (B)-(I), (C)-(III), (D)-(IV)
- (2) (A)-(II), (B)-(III), (C)-(IV), (D)-(I)
- (3) (A)-(II), (B)-(IV), (C)-(III), (D)-(I)
- (4) (A)-(II), (B)-(IV), (C)-(I), (D)-(III)

Options :

- 53100237. 1
- 53100238. 2

53100239. 3

53100240. 4

Question Number : 11 Question Id : 53100212 Question Type : MCQ Option Shuffling : No Display Question Number : Yes Is Question Mandatory : No

Correct Marks : 4 Wrong Marks : 1

Equal amounts of each ₹1,000 is lent to two persons for 3 years one @ 30% simple interest and second at 30% compound interest annually. By how much percent is the compound interest greater than the simple interest received in this 3 years duration.

- (1) 23% (2) 33%
(3) 33.33% (4) 30%

Options :

53100241. 1

53100242. 2

53100243. 3

53100244. 4

Question Number : 12 Question Id : 53100213 Question Type : MCQ Option Shuffling : No Display Question Number : Yes Is Question Mandatory : No

Correct Marks : 4 Wrong Marks : 1

Arrange the following in descending order

- (A) $3^{3^{3^3}}$
(B) $3^{(33)^3}$
(C) $(3^3)^{33}$
(D) 3^{333}

Choose the correct answer from the options given below :

- (1) $A > B > D > C$
(2) $B = C > A > D$
(3) $B > A > D > C$
(4) $A > C = D > B$

Options :

53100245. 1

53100246. 2

53100247. 3

53100248. 4

Question Number : 13 Question Id : 53100214 Question Type : MCQ Option Shuffling : No Display Question Number : Yes Is Question Mandatory : No

Correct Marks : 4 Wrong Marks : 1

Alpha and Beta are two chemical fertilizers. Alpha consists of N, P, K and Beta consists of N and P. A mixture of Alpha and Beta is prepared in which the ratio of N, P and K is 26%, 68% and 6%. The ratio of N, P, K in Alpha is 20%, 70% and 10%. What is the ratio of N and P in Beta?

- (1) 27% and 73% (2) 33% and 67%
(3) 35% and 65% (4) 30% and 70%

Options :

53100249. 1
53100250. 2
53100251. 3
53100252. 4

Question Number : 14 Question Id : 53100215 Question Type : MCQ Option Shuffling : No Display Question Number : Yes Is Question Mandatory : No

Correct Marks : 4 Wrong Marks : 1

A man takes 4 hours 20 minutes in walking to a certain place and riding back. If he walks on both sides, he loses 1 hour. The time he would take by riding both ways is

- (1) 2 hours 20 min (2) 2 hours
(3) 3 hours 20 min (4) 4 hours 40 min

Options :

53100253. 1
53100254. 2
53100255. 3
53100256. 4

Question Number : 15 Question Id : 53100216 Question Type : MCQ Option Shuffling : No Display Question Number : Yes Is Question Mandatory : No

Correct Marks : 4 Wrong Marks : 1

A merchant earns 25% profit in general. Once his 25% consignment was abducted forever by some thieves. Trying to compensate for his loss he sold the rest of his consignment by increasing his selling price by 20%. What is the new percentage profit or loss?

- (1) 10% loss (2) 12.5% loss
(3) 12.5% profit (4) 10% profit

Options :

53100257. 1
53100258. 2
53100259. 3
53100260. 4

Question Number : 16 Question Id : 53100217 Question Type : MCQ Option Shuffling : No Display Question Number : Yes Is Question Mandatory : No

In a race A, B and C take part. A beats B by 30 meters, B beats C by 20 meters and A beats C by 48 meters.

Given below are two statements:

Statement I : The length of the race is 300 meters.

Statement II : The speed of A, B and C are in the ratio 50 : 45 : 40.

In the light of the above statements, choose the correct answer from the options given below :

- (1) Both Statement I and Statement II are true
- (2) Both Statement I and Statement II are false
- (3) Statement I is true but Statement II is false
- (4) Statement I is false but Statement II is true

Options :

- 53100269. 1
- 53100270. 2
- 53100271. 3
- 53100272. 4

Question Number : 19 Question Id : 53100220 Question Type : MCQ Option Shuffling : No Display Question Number : Yes Is Question Mandatory : No

Correct Marks : 4 Wrong Marks : 1

20 girls, among whom are A and B sit down at a round table. The probability that there are 4 girls between A and B is

- (1) $\frac{2}{19}$
- (2) $\frac{6}{19}$
- (3) $\frac{13}{19}$
- (4) $\frac{17}{19}$

Options :

- 53100273. 1
- 53100274. 2
- 53100275. 3
- 53100276. 4

Question Number : 20 Question Id : 53100221 Question Type : MCQ Option Shuffling : No Display Question Number : Yes Is Question Mandatory : No

Correct Marks : 4 Wrong Marks : 1

If $x^2 = y + z$, $y^2 = z + x$ and $z^2 = x + y$ then the value of $\frac{1}{x+1} + \frac{1}{y+1} + \frac{1}{z+1}$ is

- (1) -1 (2) 1
(3) 2 (4) 4

Options :

53100277. 1
53100278. 2
53100279. 3
53100280. 4

Logical Reasoning

Section Id :	5310022
Section Number :	2
Section type :	Online
Mandatory or Optional :	Mandatory
Number of Questions :	20
Number of Questions to be attempted :	20
Section Marks :	80
Maximum Instruction Time :	0
Sub-Section Number :	1
Sub-Section Id :	5310023
Question Shuffling Allowed :	Yes

Question Number : 21 Question Id : 53100222 Question Type : MCQ Option Shuffling : No Display Question Number : Yes Is Question Mandatory : No Correct Marks : 4 Wrong Marks : 1

Choose the correct alternative that will continue the same pattern and replace the question mark (?) in the series 7, 27, 107, 427, ?

- (1) 1262 (2) 1707
(3) 827 (4) 2107

Options :

53100281. 1
53100282. 2
53100283. 3
53100284. 4

Question Number : 22 Question Id : 53100223 Question Type : MCQ Option Shuffling : No Display Question Number : Yes Is Question Mandatory : No Correct Marks : 4 Wrong Marks : 1

Choose the correct word from the given alternatives which bears the same relationship to the third word as the first two.

Chair : Furniture :: Shoe : ?

- | | |
|-------------|--------------|
| (1) Socks | (2) Footwear |
| (3) Leather | (4) Cobbler |

Options :

- 53100285. 1
- 53100286. 2
- 53100287. 3
- 53100288. 4

Question Number : 23 Question Id : 53100224 Question Type : MCQ Option Shuffling : No Display Question Number : Yes Is Question Mandatory : No Correct Marks : 4 Wrong Marks : 1

Atal Academy focuses on the performing arts. In the current batch, 40 students can sing, 60 students can dance and 24 students can act. No student is a triple threat (some one who can sing, dance and act). However, 16 students can sing as well as dance, 12 students can dance and act and 8 students can sing and act. How many students have only one performing talent?

- | | |
|--------|--------|
| (1) 44 | (2) 52 |
| (3) 60 | (4) 66 |

Options :

- 53100289. 1
- 53100290. 2
- 53100291. 3
- 53100292. 4

Question Number : 24 Question Id : 53100225 Question Type : MCQ Option Shuffling : No Display Question Number : Yes Is Question Mandatory : No Correct Marks : 4 Wrong Marks : 1

Arjun said to Nitin, "that boy playing hockey is the younger of the two brothers of the daughter of my father's wife". How is the boy playing hockey related to Arjun?

- | | |
|--------------------|--------------------|
| (1) Nephew | (2) Maternal Uncle |
| (3) Brother in law | (4) Brother |

Options :

- 53100293. 1
- 53100294. 2
- 53100295. 3
- 53100296. 4

Question Number : 25 Question Id : 53100226 Question Type : MCQ Option Shuffling : No Display

Question Number : Yes Is Question Mandatory : No

Correct Marks : 4 Wrong Marks : 1

A person walked 40 metres towards North, took a left turn and walked 20 metres. He again took a left turn and walked 40 metres. How far and in which direction is he from the starting point?

- (1) 28 metres South (2) 20 metres North
(3) 30 metres East (4) 20 metres West

Options :

53100297. 1

53100298. 2

53100299. 3




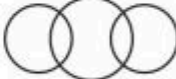
531002100. 4

Question Number : 26 Question Id : 53100227 Question Type : MCQ Option Shuffling : No Display

Question Number : Yes Is Question Mandatory : No

Correct Marks : 4 Wrong Marks : 1

Match List I with List II :

List I (Classes)	List II (Diagram)
(A) Potato, Meat, Vegetable	(I) 
(B) Law Student, Management Student, Men	(II) 
(C) Wheat, Grains, Maize	(III) 
(D) Oil, Fruit, Sugar	(IV) 

Choose the correct answer from the options given below :

- (1) (A)-(IV), (B)-(I), (C)-(II), (D)-(III)
(2) (A)-(IV), (B)-(II), (C)-(I), (D)-(III)
(3) (A)-(II), (B)-(IV), (C)-(I), (D)-(III)
(4) (A)-(II), (B)-(IV), (C)-(III), (D)-(I)

Options :

531002101. 1

531002102. 2

531002103. 3

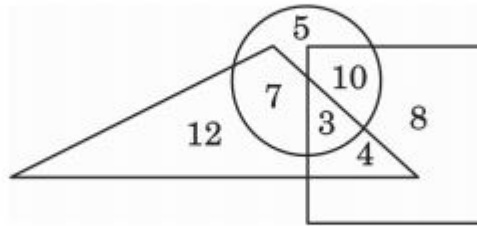
531002104. 4

Question Number : 27 Question Id : 53100228 Question Type : MCQ Option Shuffling : No Display

Question Number : Yes Is Question Mandatory : No

Correct Marks : 4 Wrong Marks : 1

In the following diagram, the square represents women, triangle represents corporate managers and circle represents MBAs. Which numbered part represents – women who are corporate managers and has done MBA as well?



(1) 4

(2) 3

(3) 10

(4) 5

Options :

531002105. 1

531002106. 2

531002107. 3

531002108. 4

Question Number : 28 Question Id : 53100229 Question Type : MCQ Option Shuffling : No Display

Question Number : Yes Is Question Mandatory : No

Correct Marks : 4 Wrong Marks : 1

How many such pairs of digits are there in the number 95137248 each of which has as many digits between them in the number as when they are arranged in the ascending order?

(1) Two

(2) Three

(3) Four

(4) Five

Options :

531002109. 1

531002110. 2

531002111. 3

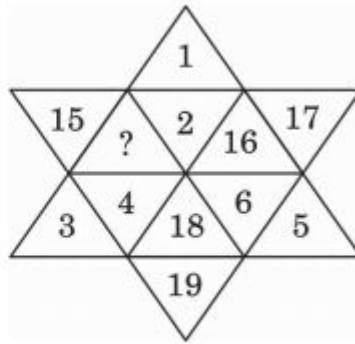
531002112. 4

Question Number : 29 Question Id : 53100230 Question Type : MCQ Option Shuffling : No Display

Question Number : Yes Is Question Mandatory : No

Correct Marks : 4 Wrong Marks : 1

Find the missing number in the following figure.



- (1) 14
(3) 20

- (2) 13
(4) 21

Options :

531002113. 1
531002114. 2
531002115. 3
531002116. 4

Question Number : 30 Question Id : 53100231 Question Type : MCQ Option Shuffling : No Display Question Number : Yes Is Question Mandatory : No

Correct Marks : 4 Wrong Marks : 1

Consider the statement given below followed by two conclusions I and II. Decide which of the conclusions logically follows from the information given in the statement.

Statement : Fashion is a form of ugliness so intolerable that we have to alter it every six months.

Conclusion : I. Fashion designers do not understand the public mind very well.
II. The public by and large is highly susceptible to novelty.

- (1) Only conclusion I follows
(3) Either I or II follows
(2) Only conclusion II follows
(4) Neither I nor II follows

Options :

531002117. 1
531002118. 2
531002119. 3
531002120. 4

Question Number : 31 Question Id : 53100232 Question Type : MCQ Option Shuffling : No Display Question Number : Yes Is Question Mandatory : No

Correct Marks : 4 Wrong Marks : 1

Consider the statements given below followed by two assumptions and decide which of the assumption is/are implicit in the statement.

Statement : "We must introduce objective type tests to improve our examinations for admission to MBA". – The chairman of the admission committee tells the committee.

Assumptions : I. The admission at present is directly through the interview.
II. The admission committee is desirous of improving the admission examinations.

- (1) Only Assumption I is implicit
- (2) Only Assumption II is implicit
- (3) Neither Assumption I nor II is implicit
- (4) Both Assumptions I and II are implicit

Options :

- 531002121. 1
- 531002122. 2
- 531002123. 3
- 531002124. 4

Question Number : 32 Question Id : 53100233 Question Type : MCQ Option Shuffling : No Display Question Number : Yes Is Question Mandatory : No Correct Marks : 4 Wrong Marks : 1

Given below are two statements : One is labelled as Assertion (A) and the other is labelled as Reason (R).

Assertion (A): Cotton is grown in alluvial soils.

Reason (R): Alluvial soils are very fertile.

In the light of the above statements, choose the correct answer from the options given below :

- (1) Both (A) and (R) are true and (R) is the correct explanation of (A)
- (2) Both (A) and (R) are true but (R) is NOT the correct explanation of (A)
- (3) (A) is true but (R) is false
- (4) (A) is false but (R) is true

Options :

- 531002125. 1
- 531002126. 2
- 531002127. 3
- 531002128. 4

Question Number : 33 Question Id : 53100234 Question Type : MCQ Option Shuffling : No Display

Question Number : Yes Is Question Mandatory : No

Correct Marks : 4 Wrong Marks : 1

The following question consists of a statement and two arguments I and II. Choose the best option.

Statement : Should India make efforts to harness solar energy to fulfill its energy requirements.

Arguments : I. Yes. Most of the energy sources used at present are exhaustible.
II. No. Harnessing solar energy requires a lot of capital, which India lacks in.

- (1) Only Argument I is strong
- (2) Only Argument II is strong
- (3) Neither Argument I nor II is strong
- (4) Both Arguments I and II are strong

Options :

531002129. 1

531002130. 2

531002131. 3

531002132. 4

Question Number : 34 Question Id : 53100235 Question Type : MCQ Option Shuffling : No Display

Question Number : Yes Is Question Mandatory : No

Correct Marks : 4 Wrong Marks : 1

Seven persons A, B, C, D, E, F and G are sitting in a straight line (not necessarily in the same order) facing North. Only two persons sit between F and G and G sits second to the left of B. D sits third to the left of C. E sits exactly between G and B and B sits at the extreme right end of row. Which of the following statements are correct?

- (A) 'F' sits at the extreme left of the line.
- (B) Two persons sit between 'E' and 'F'.
- (C) 'C' sits exactly in the middle of the line.
- (D) 'E' sits third to the right of 'A'.

Choose the most appropriate answer from the options given below :

- (1) (A), (B) and (C) only
- (2) (B), (C) and (D) only
- (3) (C) and (D) only
- (4) (A) and (C) only

Options :

531002133. 1

531002134. 2

531002135. 3

531002136. 4

Question Number : 35 Question Id : 53100236 Question Type : MCQ Option Shuffling : No Display Question Number : Yes Is Question Mandatory : No

Correct Marks : 4 Wrong Marks : 1

A clock is set right at 8 am. The clock gains 8 minutes in a day. What will be the true time when the watch indicates 11 am the next day?

- (1) 50 minutes past 10 am (2) 49 minutes past 10 am
(3) 48 minutes past 11 am (4) 51 minutes past 10 am

Options :

531002137. 1

531002138. 2

531002139. 3

531002140. 4

Question Number : 36 Question Id : 53100237 Question Type : MCQ Option Shuffling : No Display Question Number : Yes Is Question Mandatory : No

Correct Marks : 4 Wrong Marks : 1

A cube is painted red on two adjacent faces and on one opposite sides face, yellow on two opposite faces and green on the remaining face. It is then cut into 64 equal cubes. How many cubes have one red coloured face only?

- (1) 16 (2) 18
(3) 12 (4) 20

Options :

531002141. 1

531002142. 2

531002143. 3

531002144. 4

Question Number : 37 Question Id : 53100238 Question Type : MCQ Option Shuffling : No Display Question Number : Yes Is Question Mandatory : No

Correct Marks : 4 Wrong Marks : 1

- 531002153. 1
- 531002154. 2
- 531002155. 3
- 531002156. 4

Question Number : 40 Question Id : 53100241 Question Type : MCQ Option Shuffling : No Display Question Number : Yes Is Question Mandatory : No Correct Marks : 4 Wrong Marks : 1

Arrange the following words in a meaningful sequence and choose the most appropriate sequence from the given alternatives.

- (A) Police
- (B) Punishment
- (C) Crime
- (D) Court
- (E) Judgement

Choose the correct answer from the options given below :

- (1) A, C, B, E, D
- (2) E, A, B, D, C
- (3) C, A, B, D, E
- (4) C, A, D, E, B

Options :

- 531002157. 1
- 531002158. 2
- 531002159. 3
- 531002160. 4

Language Comprehension

Section Id :	5310023
Section Number :	3
Section type :	Online
Mandatory or Optional :	Mandatory
Number of Questions :	17
Number of Questions to be attempted :	17
Section Marks :	80
Maximum Instruction Time :	0
Sub-Section Number :	1
Sub-Section Id :	5310024
Question Shuffling Allowed :	Yes

Question Number : 41 Question Id : 53100242 Question Type : MCQ Option Shuffling : No Display

Question Number : Yes Is Question Mandatory : No

Correct Marks : 4 Wrong Marks : 1

Which one of the following is grammatically correct?

- (1) I could recognise his voice in once.
- (2) The family members of the patient had a anxious hour.
- (3) We should not inculcate the habit of finding fault with others.
- (4) A drowning man catches straw.

Options :

531002161. 1

531002162. 2

531002163. 3

531002164. 4

Question Number : 42 Question Id : 53100243 Question Type : MCQ Option Shuffling : No Display

Question Number : Yes Is Question Mandatory : No

Correct Marks : 4 Wrong Marks : 1

Choose the odd one out

- (1) Edmund Spenser wrote a letter to Sir Walter Raleigh.
- (2) The *Paradise Lost* was composed by John Milton.
- (3) The *Ramcharita Manas* was written by Tulasi Das.
- (4) The *Mahabharat* was written by Vedvyasa.

Options :

531002165. 1

531002166. 2

531002167. 3

531002168. 4

Question Number : 43 Question Id : 53100244 Question Type : MCQ Option Shuffling : No Display

Question Number : Yes Is Question Mandatory : No

Correct Marks : 4 Wrong Marks : 1

Which of the following is grammatically correct?

- (1) Lakshman said to Sita, "Do not cross the Lakshman Line".
- (2) Lakshman told to Sita not to cross the Lakshman Line.
- (3) Lakshman said Sita, "Do not cross the Lakshman Line"
- (4) Lakshman told to Sita, "Do not cross the Lakshman Line".

Options :

531002169. 1

531002170. 2

531002171. 3

531002172. 4

Question Number : 44 Question Id : 53100245 Question Type : MCQ Option Shuffling : No Display Question Number : Yes Is Question Mandatory : No Correct Marks : 4 Wrong Marks : 1

Choose the alternative which best expresses the meaning of the underlined phrase in the following sentence.

A good sportsman cannot afford to have a fit of the blues before the game.

- (1) Stimulants (2) Entertainment
(3) Steroids or drugs (4) Depression

Options :

531002173. 1
531002174. 2
531002175. 3
531002176. 4

Question Number : 45 Question Id : 53100246 Question Type : MCQ Option Shuffling : No Display Question Number : Yes Is Question Mandatory : No Correct Marks : 4 Wrong Marks : 1

Pick the correct option to complete the following sentence.

The officer was pleased ————— the work his subordinate did.

- (1) at (2) with
(3) on (4) upon

Options :

531002177. 1
531002178. 2
531002179. 3
531002180. 4

Question Number : 46 Question Id : 53100247 Question Type : MCQ Option Shuffling : No Display Question Number : Yes Is Question Mandatory : No Correct Marks : 4 Wrong Marks : 1

Read the following sentence and identify its correct passive form from the given options

My school bag contains ten books.

- (1) Ten books are contained in my school bag.
(2) Ten books are contained by my school bag.
(3) Ten books are contained with my school bag.
(4) Ten books are contained to my school bag.

Options :

531002181. 1

531002182. 2

531002183. 3

531002184. 4

Sub-Section Number :

2

Sub-Section Id :

5310025

Question Shuffling Allowed :

No

Question Id : 53100248 Question Type : COMPREHENSION Sub Question Shuffling Allowed : Yes Group Comprehension Questions : No Question Pattern Type : NonMatrix

Question Numbers : (47 to 49)

“Although Babur and Humayun, ——(i)—— the Delhi Sultanate that ruled previously, had considered Delhi to be their capital, Akbar had shifted it to Agra. Forts, palaces and mausoleums of peerless grandeur came up in just a few years. Jahangir and in the early part of his reign, Shahjahan, continued to ——(ii)—— Akbarabad. But now, the Emperor wanted to build a fine new city for his ——(iii)——, which would bear his name and outstretch the creation of his grandfather, in both splendour and scale”.

In the above passage, there are blanks, each of which has been numbered. Find out the appropriate option in each case to replace the given numbers.

Sub questions

Question Number : 47 Question Id : 53100249 Question Type : MCQ Option Shuffling : No Display Question Number : Yes Is Question Mandatory : No

Correct Marks : 4 Wrong Marks : 1

Pick the appropriate replacement for (i)

- | | |
|-------------------------------|---|
| (1) following the example of | (2) executing the orders in |
| (3) implementing the rules as | (4) reading the Delhi Sultanate history |

Options :

531002185. 1

531002186. 2

531002187. 3

531002188. 4

Question Number : 48 Question Id : 53100250 Question Type : MCQ Option Shuffling : No Display Question Number : Yes Is Question Mandatory : No

Correct Marks : 4 Wrong Marks : 1

Pick the appropriate replacement for (ii)

- | | |
|---------------|--------------|
| (1) look down | (2) look for |
| (3) look upon | (4) look in |

Options :

531002189. 1

531002190. 2

531002191. 3

531002192. 4

**Question Number : 49 Question Id : 53100251 Question Type : MCQ Option Shuffling : No Display
Question Number : Yes Is Question Mandatory : No
Correct Marks : 4 Wrong Marks : 1**

Pick the appropriate replacement for (iii)

- (1) entertainment and sport (2) capital
(3) grandfather (4) court

Options :

531002193. 1

531002194. 2

531002195. 3

531002196. 4

Sub-Section Number : 3
Sub-Section Id : 5310026
Question Shuffling Allowed : Yes

**Question Number : 50 Question Id : 53100252 Question Type : MCQ Option Shuffling : No Display
Question Number : Yes Is Question Mandatory : No
Correct Marks : 4 Wrong Marks : 1**

Choose the alternative which best expresses the opposite meaning of the underlined phrase in the following sentence.

You should not look down upon those who are financially weak.

- (1) abhor (2) be unsympathetic to
(3) love (4) hate

Options :

531002197. 1

531002198. 2

531002199. 3

531002200. 4

**Question Number : 51 Question Id : 53100253 Question Type : MCQ Option Shuffling : No Display
Question Number : Yes Is Question Mandatory : No
Correct Marks : 4 Wrong Marks : 1**

Read the following sentences and choose the ones belonging to the domain of **compound sentences**.

- (A) Her fear is that she may fall ill.
- (B) Sheela is clever, still she does not do well in her studies.
- (C) Noel was caught stealing, therefore he was punished.
- (D) That animal is either a fish or a serpent.

Choose the correct answer from the options given below :

- (1) (A), (B) and (C) only
- (2) (B), (C) and (D) only
- (3) (A), (C) and (D) only
- (4) (A), (B) and (D) only

Options :

- 531002201. 1
- 531002202. 2
- 531002203. 3
- 531002204. 4

Question Number : 52 Question Id : 53100254 Question Type : MCQ Option Shuffling : No Display Question Number : Yes Is Question Mandatory : No Correct Marks : 4 Wrong Marks : 1

Read the following sentences and choose the ones written in incorrect English.

- (A) The lion is king of beasts.
- (B) The rose is queen of flowers.
- (C) The pen is mightier than the sword.
- (D) This is a boy I told you about.

Choose the correct answer from the options given below :

- (1) (A), (B) and (C) only
- (2) (B), (C) and (D) only
- (3) (A), (C) and (D) only
- (4) (A), (B) and (D) Only

Options :

- 531002205. 1
- 531002206. 2
- 531002207. 3
- 531002208. 4

Question Number : 53 Question Id : 53100255 Question Type : MCQ Option Shuffling : No Display

Question Number : Yes Is Question Mandatory : No

Correct Marks : 4 Wrong Marks : 1

Match List I with List II :

List I	List II
(A) Amicable	(I) Destitution
(B) Penuary	(II) Deception
(C) Imposture	(III) Anxious
(D) Solicitous	(IV) Harmonious

Choose the correct answer from the options given below :

- (1) (A)-(IV), (B)-(III), (C)-(II), (D)-(I)
- (2) (A)-(III), (B)-(II), (C)-(I), (D)-(IV)
- (3) (A)-(I), (B)-(IV), (C)-(II), (D)-(III)
- (4) (A)-(IV), (B)-(I), (C)-(II), (D)-(III)

Options :

531002209. 1

531002210. 2

531002211. 3

531002212. 4

Question Number : 54 Question Id : 53100256 Question Type : MCQ Option Shuffling : No Display

Question Number : Yes Is Question Mandatory : No

Correct Marks : 4 Wrong Marks : 1

Match List I with List II :

List I (Sentence)	List II (Type of noun)
(A) <u>Shri Rama</u> killed Ravana.	(I) Abstract noun
(B) <u>The jury</u> found the prisoner guilty.	(II) Common noun
(C) <u>Honesty</u> is the best policy.	(III) Collective noun
(D) <u>Cow</u> gives us milk.	(IV) Proper noun

Choose the correct answer from the options given below :

- (1) (A)-(I), (B)-(II), (C)-(III), (D)-(IV)
- (2) (A)-(II), (B)-(IV), (C)-(I), (D)-(III)
- (3) (A)-(IV), (B)-(III), (C)-(I), (D)-(II)
- (4) (A)-(III), (B)-(I), (C)-(IV), (D)-(II)

Options :

531002213. 1

531002214. 2

531002215. 3

531002216. 4

**Question Number : 55 Question Id : 53100257 Question Type : MCQ Option Shuffling : No Display
Question Number : Yes Is Question Mandatory : No
Correct Marks : 4 Wrong Marks : 1**

Rearrange the following components to get a meaningful sentence.

- (A) of an old and infirm sanyasi
- (B) Ravana came in the form
- (C) and lifting Sita along with
- (D) put her on his chariot
- (E) the piece of ground on which she stood

Choose the correct answer from the options given below :

- (1) B, A, C, E, D
- (2) D, E, C, A, B
- (3) A, B, C, D, E
- (4) E, D, C, B, A

Options :

531002217. 1

531002218. 2

531002219. 3

531002220. 4

**Question Number : 56 Question Id : 53100258 Question Type : MCQ Option Shuffling : No Display
Question Number : Yes Is Question Mandatory : No
Correct Marks : 4 Wrong Marks : 1**

Arrange the following in correct order

- (A) It saw the arrest of some major politicians for corruption and as usual saw self-serving coalitions between political parties.
- (B) In short, it had enough for Khushwant Singh to give his opinion on a range of topics.
- (C) It also saw some sex-scandals as well as deaths of a few famous people.
- (D) The year 2009 saw the national elections as well as elections to a few state assemblies.

Choose the correct answer from the options given below :

- (1) D, A, C, B
- (2) B, A, D, C
- (3) C, B, D, A
- (4) A, B, C, D

Options :

- 531002221. 1
- 531002222. 2
- 531002223. 3
- 531002224. 4

Question Number : 57 Question Id : 53100259 Question Type : MCQ Option Shuffling : No Display Question Number : Yes Is Question Mandatory : No Correct Marks : 4 Wrong Marks : 1

Given below are two statements : One is labelled as Assertion (A) and the other is labelled as Reason (R).

Assertion (A) : Articles are very important words in English and so is their knowledge.

Reasons (R) : Two or more pronouns joined by "and" require a plural verb.

In the light of the above statements, choose the correct answer from the options given below :

- (1) Both (A) and (R) are true and (R) is the correct explanation of (A)
- (2) Both (A) and (R) are true but (R) is NOT the correct explanation of (A)
- (3) (A) is true but (R) is false
- (4) (A) is false but (R) is true

Options :

- 531002225. 1
- 531002226. 2
- 531002227. 3

531002228. 4

Question Number : 58 Question Id : 53100260 Question Type : MCQ Option Shuffling : No Display Question Number : Yes Is Question Mandatory : No Correct Marks : 4 Wrong Marks : 1

Given below are two sentences :

Sentence I : I am to see him tomorrow.

Sentence II : We are to be married next month.

In the light of the above statements, choose the correct answer from the options given below :

- (1) Both Sentence I and Sentence II are correct
- (2) Both Sentence I and Sentence II are wrong
- (3) Sentence I is correct but Sentence II is wrong
- (4) Sentence I is wrong but Sentence II is correct

Options :

531002229. 1

531002230. 2

531002231. 3

531002232. 4

Sub-Section Number :

4

Sub-Section Id :

5310027

Question Shuffling Allowed :

No

Question Id : 53100261 Question Type : COMPREHENSION Sub Question Shuffling Allowed : Yes Group Comprehension Questions : No Question Pattern Type : NonMatrix Question Numbers : (59 to 60)

Read the following passage and answer the questions that follow.

"Everyone in the fort was watching the action below with bated breath. Shivaji dismounted at the first gate and ran up the steps. The cannons were waiting for his signal and everyone was watching him wide-eyed. His white kurta was torn at the back and was blowing in the wind. The front was drenched in blood and his hair was disheveled".

Sub questions

Question Number : 59 Question Id : 53100262 Question Type : MCQ Option Shuffling : No Display Question Number : Yes Is Question Mandatory : No Correct Marks : 4 Wrong Marks : 1

Identify the narrative viewpoint employed in the above passage.

- (1) First person narrative (2) Second person narrative
(3) Third person narrative (4) Mixed narrative

Options :

531002233. 1
531002234. 2
531002235. 3
531002236. 4

**Question Number : 60 Question Id : 53100263 Question Type : MCQ Option Shuffling : No Display
Question Number : Yes Is Question Mandatory : No**

Correct Marks : 4 Wrong Marks : 1

What is the background of the actions taking place in the given passage

- (1) Battlefield (2) Celebration
(3) Physical exercise practice (4) Religious rituals

Options :

531002237. 1
531002238. 2
531002239. 3
531002240. 4

General Awareness

Section Id :	5310024
Section Number :	4
Section type :	Online
Mandatory or Optional :	Mandatory
Number of Questions :	20
Number of Questions to be attempted :	20
Section Marks :	80
Maximum Instruction Time :	0
Sub-Section Number :	1
Sub-Section Id :	5310028
Question Shuffling Allowed :	Yes

**Question Number : 61 Question Id : 53100264 Question Type : MCQ Option Shuffling : No Display
Question Number : Yes Is Question Mandatory : No**

Correct Marks : 4 Wrong Marks : 1

Who has been the Vice President of India?

- (A) Mr. B.D. Jatti
- (B) Mr. Krishnakant
- (C) Giani Zail Singh
- (D) Mr. Venkaiya Naidu

Choose the most appropriate answer from the options given below :

- (1) (A) and (C) only
- (2) (A), (B) and (D) only
- (3) (B) and (C) only
- (4) (A), (B), and (C) only

Options :

- 531002241. 1
- 531002242. 2
- 531002243. 3
- 531002244. 4

Question Number : 62 Question Id : 53100265 Question Type : MCQ Option Shuffling : No Display Question Number : Yes Is Question Mandatory : No

Correct Marks : 4 Wrong Marks : 1

Given below are two statements :

Statement I : State Legislatures do not take part in the election of Vice-President.

Statement II : The electoral college for Vice-President consist of the members of both houses of Parliament.

In the light of the above statements, choose the most appropriate answer from the options given below :

- (1) Both Statement I and Statement II are correct
- (2) Both Statement I and Statement II are incorrect
- (3) Statement I is correct but Statement II is incorrect
- (4) Statement I is incorrect but Statement II is correct

Options :

- 531002245. 1
- 531002246. 2
- 531002247. 3
- 531002248. 4

Question Number : 63 Question Id : 53100266 Question Type : MCQ Option Shuffling : No Display

Question Number : Yes Is Question Mandatory : No

Correct Marks : 4 Wrong Marks : 1

Given below are two statements :

Statement I : Insulin was discovered by Banting and Best in 1921.

Statement II : Insulin controls the process of making glycogen from glucose.

In the light of the above statements, choose the most appropriate answer from the options given below :

- (1) Both Statement I and Statement II are correct
- (2) Both Statement I and Statement II are incorrect
- (3) Statement I is correct but Statement II is incorrect
- (4) Statement I is incorrect but Statement II is correct

Options :

531002249. 1

531002250. 2

531002251. 3

531002252. 4

Question Number : 64 Question Id : 53100267 Question Type : MCQ Option Shuffling : No Display

Question Number : Yes Is Question Mandatory : No

Correct Marks : 4 Wrong Marks : 1

Match List I with List II :

List I	List II
(A) Article-14	(I) Protection of life and personal liberty
(B) Article-21	(II) Prohibition of employment of children in factories
(C) Article-24	(III) Equality before law
(D) Article-50	(IV) Separation of judiciary from executive

Choose the correct answer from the options given below :

- (1) (A)-(I), (B)-(III), (C)-(II), (D)-(IV)
- (2) (A)-(III), (B)-(I), (C)-(II), (D)-(IV)
- (3) (A)-(I), (B)-(II), (C)-(III), (D)-(IV)
- (4) (A)-(I), (B)-(II), (C)-(IV), (D)-(III)

Options :

531002253. 1

531002254. 2

531002255. 3

531002256. 4

**Question Number : 65 Question Id : 53100268 Question Type : MCQ Option Shuffling : No Display
Question Number : Yes Is Question Mandatory : No
Correct Marks : 4 Wrong Marks : 1**

Match List I with List II :

List I	List II
(A) Temperature	(I) Kilogram (kg)
(B) Mass	(II) Meter (m)
(C) Electric current	(III) Kelvin (K)
(D) Length	(IV) Ampere (A)

Choose the correct answer from the options given below :

- (1) (A)-(II), (B)-(III), (C)-(IV), (D)-(I)
- (2) (A)-(III), (B)-(II), (C)-(IV), (D)-(I)
- (3) (A)-(I), (B)-(III), (C)-(IV), (D)-(II)
- (4) (A)-(III), (B)-(I), (C)-(IV), (D)-(II)

Options :

531002257. 1

531002258. 2

531002259. 3

531002260. 4

**Question Number : 66 Question Id : 53100269 Question Type : MCQ Option Shuffling : No Display
Question Number : Yes Is Question Mandatory : No
Correct Marks : 4 Wrong Marks : 1**

Match List I with List II :

List I	List II
(A) Electrical Energy into mechanical energy	(I) Dynamo
(B) Electrical Energy into Light energy	(II) Tube light
(C) Mechanical Energy into Electrical Energy	(III) Electric meter
(D) Solar energy into electrical energy	(IV) Solar cell

Choose the correct answer from the options given below :

- (1) (A)-(I), (B)-(II), (C)-(IV), (D)-(III)
- (2) (A)-(III), (B)-(II), (C)-(I), (D)-(IV)
- (3) (A)-(III), (B)-(I), (C)-(II), (D)-(IV)
- (4) (A)-(IV), (B)-(III), (C)-(II), (D)-(I)

Options :

531002261. 1
531002262. 2
531002263. 3
531002264. 4

Question Number : 67 Question Id : 53100270 Question Type : MCQ Option Shuffling : No Display Question Number : Yes Is Question Mandatory : No

Correct Marks : 4 Wrong Marks : 1

Read the following statements carefully.

- (A) Allauddin Khilji was the founder of Khilji dynasty of India.
- (B) Allauddin Khilji introduced the system of Dagh (The branding of horse).
- (C) Allauddin Khilji created a post called "Mustakharaj".
- (D) Amir Khusrau, was favourite court poet of Allauddin Khilji.
- (E) Allauddin Khilji died in the year 1320.

Choose the correct answer from the options given below :

- (1) (A), (B) and (C) only are correct statements.
- (2) (B) and (D) only are correct statements.
- (3) (B), (C) and (D) only are correct statements.
- (4) (D) and (E) only are correct statements.

Options :

531002265. 1
531002266. 2
531002267. 3
531002268. 4

Question Number : 68 Question Id : 53100271 Question Type : MCQ Option Shuffling : No Display Question Number : Yes Is Question Mandatory : No Correct Marks : 4 Wrong Marks : 1

Given below are 4 statements (A), (B), (C) and (D). Please read them carefully and response the question given after these statements.

- (A) The crust of the earth comprises of rocks rich in Silica and Alluminium.
- (B) The core of the earth consists of metals in liquid state of high temperature and pressure.
- (C) The Magnesium and Phosphorus are dominant in the core of the earth.
- (D) Hydrosphere covers approximately 71% of the total surface area of the earth.

Choose the correct answer from the options given below :

- (1) (A) and (B) only are correct statements.
- (2) (A) and (D) only are correct statements.
- (3) (B), (C) and (D) only are correct statements.
- (4) (A), (B) and (D) only are correct statements.

Options :

- 531002269. 1
- 531002270. 2
- 531002271. 3
- 531002272. 4

Question Number : 69 Question Id : 53100272 Question Type : MCQ Option Shuffling : No Display Question Number : Yes Is Question Mandatory : No Correct Marks : 4 Wrong Marks : 1

Given below are few statements. Please read them carefully and response the question followed by these statements.

- (A) The study of universe is known as Cosmology.
- (B) The study of dreams is known as Oneirology.
- (C) The study of beauty of human is known as Osteology.
- (D) The study of cell is known as Arthrology.
- (E) The study of blood is known as Hepatology.

Choose the correct answer from the options given below :

- (1) (A) and (B) only are correct statements.
- (2) (B) and (C) only are correct statements.
- (3) (C) and (D) only are correct statements.
- (4) (D) and (E) only are correct statements.

Options :

- 531002273. 1
- 531002274. 2
- 531002275. 3
- 531002276. 4

Question Number : 70 Question Id : 53100273 Question Type : MCQ Option Shuffling : No Display Question Number : Yes Is Question Mandatory : No Correct Marks : 4 Wrong Marks : 1

The Olympics in 2028 will be held at

- (1) Los Angeles (USA)
- (2) London (UK)
- (3) Beijing (China)
- (4) Melbourne (Australia)

Options :

- 531002277. 1
- 531002278. 2
- 531002279. 3
- 531002280. 4

Question Number : 71 Question Id : 53100274 Question Type : MCQ Option Shuffling : No Display Question Number : Yes Is Question Mandatory : No Correct Marks : 4 Wrong Marks : 1

Given below are four distinct statements. Please read them carefully and response the question that is given thereafter.

- (A) Bandipur National Park is located in Kerala.
- (B) Jim Corbett National Park is located in Uttarakhand.
- (C) Dudhwa National Park is located in U.P.
- (D) Gir National Park is located in Rajasthan.

Choose the most appropriate answer from the options given below :

- (1) (A) and (B) only are correct statements.
- (2) (B) and (C) only are correct statements.
- (3) (A) and (C) only are correct statements.
- (4) (C) and (D) only are correct statements

Options :

- 531002281. 1
- 531002282. 2
- 531002283. 3
- 531002284. 4

Question Number : 72 Question Id : 53100275 Question Type : MCQ Option Shuffling : No Display Question Number : Yes Is Question Mandatory : No

Correct Marks : 4 Wrong Marks : 1

Given below are four distinct statements. Please read them carefully and response the question that is given thereafter.

- (A) White Revolution is related to Milk production.
- (B) Black Revolution is related to Honey production.
- (C) Blue Revolution is related to leather production.
- (D) Yellow Revolution is related to oil seeds production.

Choose the most appropriate answer from the options given below :

- (1) (A) and (B) only are correct statements.
- (2) (B) and (D) only are correct statements.
- (3) (A) and (D) only are correct statements.
- (4) (C) and (D) only are correct statements.

Options :

- 531002285. 1
- 531002286. 2
- 531002287. 3
- 531002288. 4

Question Number : 73 Question Id : 53100276 Question Type : MCQ Option Shuffling : No Display Question Number : Yes Is Question Mandatory : No

Correct Marks : 4 Wrong Marks : 1

The Biosphere Reserve 'Simlipal' is situated in _____

- (1) West Bengal
- (2) Andhra Pradesh
- (3) Odisha
- (4) Jharkhand

Options :

- 531002289. 1
- 531002290. 2
- 531002291. 3
- 531002292. 4

Question Number : 74 Question Id : 53100277 Question Type : MCQ Option Shuffling : No Display Question Number : Yes Is Question Mandatory : No

Correct Marks : 4 Wrong Marks : 1

The Famous Books, 'Ain-I-Akbari' and 'Akbarnama', were written by -

- (1) Firadausi
- (2) Al Beruni
- (3) Malik Mohammed Jayasi
- (4) Abul Fazal

Options :

- 531002293. 1

531002294. 2

531002295. 3

531002296. 4

Question Number : 75 Question Id : 53100278 Question Type : MCQ Option Shuffling : No Display Question Number : Yes Is Question Mandatory : No

Correct Marks : 4 Wrong Marks : 1

Which of the following soils is formed by weathering of crystalline and metamorphic mixture of clay and sand?

(1) Alluvial soils

(2) Red soils

(3) Black soils

(4) Laterite soils

Options :

531002297. 1

531002298. 2

531002299. 3

531002300. 4

Question Number : 76 Question Id : 53100279 Question Type : MCQ Option Shuffling : No Display Question Number : Yes Is Question Mandatory : No

Correct Marks : 4 Wrong Marks : 1

Dassiyattam is the old name of famous Indian dance

(1) Kathakali

(2) Mohiniyattam

(3) Bharatanatyam

(4) Kuchupudi

Options :

531002301. 1

531002302. 2

531002303. 3

531002304. 4

Question Number : 77 Question Id : 53100280 Question Type : MCQ Option Shuffling : No Display Question Number : Yes Is Question Mandatory : No

Correct Marks : 4 Wrong Marks : 1

The first 'Chief of Defence staff' of our country who died in a helicopter crash in 2021

(1) General P.N. Thapar

(2) General V.K. Singh

(3) General Bipin Rawat

(4) General B.C. Joshi

Options :

531002305. 1

531002306. 2

531002307. 3

531002308. 4

Question Number : 78 Question Id : 53100281 Question Type : MCQ Option Shuffling : No Display
Question Number : Yes Is Question Mandatory : No
Correct Marks : 4 Wrong Marks : 1

Wankhede Cricket Stadium is situated in

- | | |
|-------------|-------------|
| (1) Delhi | (2) Chennai |
| (3) Kolkata | (4) Mumbai |

Options :

- 531002309. 1
- 531002310. 2
- 531002311. 3
- 531002312. 4

Question Number : 79 Question Id : 53100282 Question Type : MCQ Option Shuffling : No Display
Question Number : Yes Is Question Mandatory : No
Correct Marks : 4 Wrong Marks : 1

Cricket is the National Game of which country?

- | | |
|---------------|------------|
| (1) India | (2) Russia |
| (3) Australia | (4) China |

Options :

- 531002313. 1
- 531002314. 2
- 531002315. 3
- 531002316. 4

Question Number : 80 Question Id : 53100283 Question Type : MCQ Option Shuffling : No Display
Question Number : Yes Is Question Mandatory : No
Correct Marks : 4 Wrong Marks : 1

The blue colour of sky is due to

- | | |
|---------------------------|---------------------------|
| (1) Interference of light | (2) Diffraction of light |
| (3) Scattering of light | (4) Polarisation of light |

Options :

- 531002317. 1
- 531002318. 2
- 531002319. 3
- 531002320. 4

Innovation & Entrepreneurship

Section Id :

5310025

Section Number :	5
Section type :	Online
Mandatory or Optional :	Mandatory
Number of Questions :	20
Number of Questions to be attempted :	20
Section Marks :	80
Maximum Instruction Time :	0
Sub-Section Number :	1
Sub-Section Id :	5310029
Question Shuffling Allowed :	Yes

Question Number : 81 Question Id : 53100284 Question Type : MCQ Option Shuffling : No Display Question Number : Yes Is Question Mandatory : No Correct Marks : 4 Wrong Marks : 1

A word, symbol, name or device that a business uses to identify its goods and distinguish itself from competitors is known as

- | | |
|---------------|------------------|
| (1) Patent | (2) Copyright |
| (3) Trademark | (4) Trade secret |

Options :

- 531002321. 1
- 531002322. 2
- 531002323. 3
- 531002324. 4

Question Number : 82 Question Id : 53100285 Question Type : MCQ Option Shuffling : No Display Question Number : Yes Is Question Mandatory : No Correct Marks : 4 Wrong Marks : 1

Given below are two statements : One is labelled as Assertion (A) and the other is labelled as Reason (R).

Assertion (A) : 'The management of technological innovation' is usually required under circumstances with increased vagueness, uncertainty and risk and companies are giving importance to it.

Reasons (R) : Given that technological innovation is for many companies a primary way of competition in the twenty-first century, it's management is an activity of vital importance.

In the light of the above statements, choose the most appropriate answer from the options given below :

- (1) Both (A) and (R) are correct and (R) is the correct explanation of (A)
- (2) Both (A) and (R) are correct but (R) is NOT the correct explanation of (A)
- (3) (A) is correct but (R) is not correct
- (4) (A) is not correct but (R) is correct

Options :

531002325. 1

531002326. 2

531002327. 3

531002328. 4

Question Number : 83 Question Id : 53100286 Question Type : MCQ Option Shuffling : No Display Question Number : Yes Is Question Mandatory : No Correct Marks : 4 Wrong Marks : 1

Given below are two statements : One is labelled as Assertion (A) and the other is labelled as Reason (R).

Assertion (A) : As India moves progressively towards becoming a global knowledge economy, it must meet the rising aspirations of it's youth. This can be partially achieved through focus on advancement of skills that are relevant to the emerging economic environment.

Reason (R) : 62% of India's population is in the working age group (15-59 years) and more than 54% of the total population is below 25 years of age. Our country presently faces a dual challenge of paucity of highly trained workforce as well as non employability of the large work force of the conventional educated youth.

In the light of the above statements, choose the correct answer from the options given below :

- (1) Both (A) and (R) are true and (R) is the correct explanation of (A)
- (2) Both (A) and (R) are true but (R) is NOT the correct explanation of (A)
- (3) (A) is true but (R) is false
- (4) (A) is false but (R) is true

Options :

531002329. 1

531002330. 2

531002331. 3

531002332. 4

Question Number : 84 Question Id : 53100287 Question Type : MCQ Option Shuffling : No Display

Question Number : Yes Is Question Mandatory : No

Correct Marks : 4 Wrong Marks : 1

'Feasibility analysis' is described as below :

- (A) It is the process of accessing whether the business idea is viable.
- (B) It is the preliminary evaluation of a business idea done for the purpose of determining whether the idea is worth pursuing.
- (C) It is to guess time span in which investment made in the project be recovered.
- (D) It is to find whether technology adopted will work correct.
- (E) It is to estimate demand and to plan supply accordingly.

Choose the correct answer from the options given below :

- (1) Only (A) is correct statement
- (2) Only (B) is correct statement
- (3) Only (A) and (B) are correct statements
- (4) Only (C), (D) and (A) are correct statements

Options :

531002333. 1

531002334. 2

531002335. 3

531002336. 4

Question Number : 85 Question Id : 53100288 Question Type : MCQ Option Shuffling : No Display Question Number : Yes Is Question Mandatory : No Correct Marks : 4 Wrong Marks : 1

Given below are two statements :

Statement I : An Intrapreneur operates within a large organisation to drive innovation.

Statement II : An Intrapreneur is the same as an entrepreneur, working independently to start a new business.

In the light of the above statements, choose the most appropriate answer from the options given below :

- (1) Both Statement I and Statement II are correct
- (2) Both Statement I and Statement II are incorrect
- (3) Statement I is correct but Statement II is incorrect
- (4) Statement I is incorrect but Statement II is correct

Options :

531002337. 1

531002338. 2

531002339. 3

531002340. 4

Question Number : 86 Question Id : 53100289 Question Type : MCQ Option Shuffling : No Display Question Number : Yes Is Question Mandatory : No Correct Marks : 4 Wrong Marks : 1

Given below are two statements :

Statement I : Lean start up methodology prioritizes extensive market research before any product.

Statement II : Lean start up methodology focuses on creating a Minimal Viable Product (MVP) to test hypotheses.

In the light of the above statements, choose the correct answer from the options given below :

- (1) Both Statement I and Statement II are true
- (2) Both Statement I and Statement II are false
- (3) Statement I is true but Statement II is false
- (4) Statement I is false but Statement II is true

Options :

531002341. 1

531002342. 2

531002343. 3

531002344. 4

Question Number : 87 Question Id : 53100290 Question Type : MCQ Option Shuffling : No Display Question Number : Yes Is Question Mandatory : No Correct Marks : 4 Wrong Marks : 1

Venture Capital financing is _____

- (A) Type of financing by venture capital.
- (B) It is private equity capital provided as seed funding to early stage.
- (C) Investment in blue chip companies for assured return.
- (D) It is a high risk investment made with an intention of creating high returns.
- (E) Done in technology projects only.

Choose the correct answer from the options given below :

- (1) (A), (B), (D) and (E) only are correct statements.
- (2) (A), (B) and (D) only are correct statements.
- (3) (A), (B) and (E) only are correct statements.
- (4) (C), (D) and (E) only are correct statements.

Options :

- 531002345. 1
- 531002346. 2
- 531002347. 3
- 531002348. 4

Question Number : 88 Question Id : 53100291 Question Type : MCQ Option Shuffling : No Display Question Number : Yes Is Question Mandatory : No Correct Marks : 4 Wrong Marks : 1

Match List I with List II :

List I	List II
(A) Equity financing	(I) No profit No loss
(B) Strategic Alliance	(II) Selling ownership shares
(C) Entrepreneurial Mindset	(III) Partnership for mutual benefit
(D) Break even point	(IV) Innovative thinking

Choose the correct answer from the options given below :

- (1) (A)-(III), (B)-(II), (C)-(IV), (D)-(I)
- (2) (A)-(III), (B)-(IV), (C)-(II), (D)-(I)
- (3) (A)-(II), (B)-(III), (C)-(IV), (D)-(I)
- (4) (A)-(IV), (B)-(II), (C)-(III), (D)-(I)

Options :

- 531002349. 1
- 531002350. 2
- 531002351. 3
- 531002352. 4

Question Number : 89 Question Id : 53100292 Question Type : MCQ Option Shuffling : No Display

Question Number : Yes Is Question Mandatory : No

Correct Marks : 4 Wrong Marks : 1

Which of the following funding sources is specifically aimed at helping early-stage startups?

- (1) Series funding
- (2) Angel investment
- (3) Corporate bonds
- (4) Initial Public Offering (IPO)

Options :

531002353. 1

531002354. 2

531002355. 3

531002356. 4

Question Number : 90 Question Id : 53100293 Question Type : MCQ Option Shuffling : No Display

Question Number : Yes Is Question Mandatory : No

Correct Marks : 4 Wrong Marks : 1

Given below are two statements: One is labelled as Assertion (A) and the other is labelled as Reason (R).

Assertion (A): Bootstrapping entrepreneurship is one of the most adapted entrepreneurship in India.

Reasons (R): Managing a business through one's own financial resources are the first and easy option available for the entrepreneur to start a business.

In the light of the above statements, choose the most appropriate answer from the options given below :

- (1) Both (A) and (R) are correct and (R) is the correct explanation of (A)
- (2) Both (A) and (R) are correct but (R) is NOT the correct explanation of (A)
- (3) (A) is correct but (R) is not correct
- (4) (A) is not correct but (R) is correct

Options :

531002357. 1

531002358. 2

531002359. 3

531002360. 4

Question Number : 91 Question Id : 53100294 Question Type : MCQ Option Shuffling : No Display

Question Number : Yes Is Question Mandatory : No

Correct Marks : 4 Wrong Marks : 1

Given below are two statements :

Statement I : Cost-Benefit Analysis (CBA) measures a project's societal effects and does costs and benefits comparable in monetary terms.

Statement II : CBA is most widely applied tool for the appraisal of transport project.

In the light of the above statements, choose the correct answer from the options given below :

- (1) Both Statement I and Statement II are true
- (2) Both Statement I and Statement II are false
- (3) Statement I is true but Statement II is false
- (4) Statement I is false but Statement II is true

Options :

- 531002361. 1
- 531002362. 2
- 531002363. 3
- 531002364. 4

Question Number : 92 Question Id : 53100295 Question Type : MCQ Option Shuffling : No Display Question Number : Yes Is Question Mandatory : No

Correct Marks : 4 Wrong Marks : 1

The 'Stand up India Scheme' focuses on providing financial support for -

- (A) Innovators for rural and semi-urban area.
- (B) Woman entrepreneurs.
- (C) Scheduled Caste (SC) entrepreneurs
- (D) Scheduled Tribes (ST) entrepreneurs

Choose the most appropriate answer from the options given below :

- (1) (A) and (D) only
- (2) (B) and (C) only
- (3) (B), (C) and (D) only
- (4) (B) and (D) only

Options :

- 531002365. 1
- 531002366. 2
- 531002367. 3
- 531002368. 4

**Question Number : 93 Question Id : 53100296 Question Type : MCQ Option Shuffling : No Display
Question Number : Yes Is Question Mandatory : No
Correct Marks : 4 Wrong Marks : 1**

Match List I with List II :

List I	List II
(A) Intrapreneur	(I) Value addition in supply chain
(B) Entrepreneur	(II) Funding start up
(C) Venture capitalist	(III) Risk taking in an organisational role as an employee
(D) Distributor	(IV) Calculated risk taking

Choose the correct answer from the options given below :

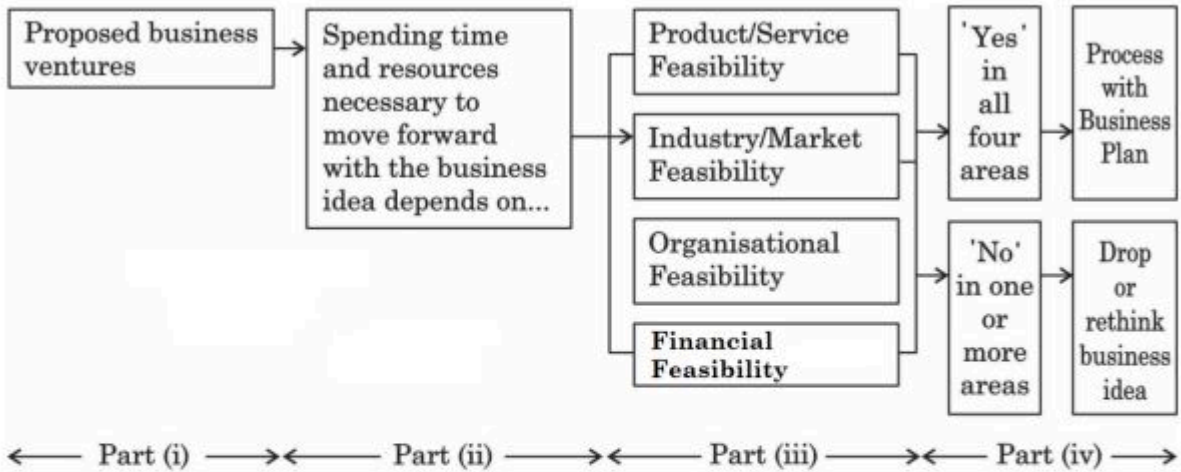
- (1) (A)-(III), (B)-(II), (C)-(I), (D)-(IV)
- (2) (A)-(III), (B)-(II), (C)-(IV), (D)-(I)
- (3) (A)-(III), (B)-(IV), (C)-(II), (D)-(I)
- (4) (A)-(III), (B)-(I), (C)-(II), (D)-(IV)

Options :

- 531002369. 1
- 531002370. 2
- 531002371. 3
- 531002372. 4

**Question Number : 94 Question Id : 53100297 Question Type : MCQ Option Shuffling : No Display
Question Number : Yes Is Question Mandatory : No
Correct Marks : 4 Wrong Marks : 1**

Feasibility analysis may be processed as follows.



- (1) Only part (iii) is correct
- (2) Only part (i), (ii) and (iv) correct
- (3) Only part (i), (ii), (iii) and (iv) correct
- (4) Only part (ii) is correct

Options :

- 531002373. 1
- 531002374. 2
- 531002375. 3
- 531002376. 4

Question Number : 95 Question Id : 53100298 Question Type : MCQ Option Shuffling : No Display Question Number : Yes Is Question Mandatory : No Correct Marks : 4 Wrong Marks : 1

Who is a Fabian Entrepreneur?

- (1) Innovators who rapidly adopt changes.
- (2) Entrepreneurs who cannot adopt to changes and prefer old fashioned business practices.
- (3) Entrepreneurs who copy ideas from others.
- (4) Entrepreneurs who take significant risk.

Options :

- 531002377. 1
- 531002378. 2
- 531002379. 3
- 531002380. 4

Question Number : 96 Question Id : 53100299 Question Type : MCQ Option Shuffling : No Display Question Number : Yes Is Question Mandatory : No

Correct Marks : 4 Wrong Marks : 1

An entrepreneur is a person who

- (1) moderately takes calculated risk.
- (2) only follow instructions as subordinate.
- (3) works as an employee in a Firm/Company.
- (4) manage the given task professionally as a Manager of a Firm/Company.

Options :

531002381. 1

531002382. 2

531002383. 3

531002384. 4

Question Number : 97 Question Id : 531002100 Question Type : MCQ Option Shuffling : No Display Question Number : Yes Is Question Mandatory : No

Correct Marks : 4 Wrong Marks : 1

Given below are two statements :

Statement I : Creativity is function of novel and useful & potential value ideas.

Statement II : Creativity is complicated and multi dimensional concept with many components, such as knowledge cognition, personality, intelligence and motivation.

In the light of the above statements, choose the correct answer from the options given below :

- (1) Both Statement I and Statement II are true
- (2) Both Statement I and Statement II are false
- (3) Statement I is true but Statement II is false
- (4) Statement I is false but Statement II is true

Options :

531002385. 1

531002386. 2

531002387. 3

531002388. 4

Question Number : 98 Question Id : 531002101 Question Type : MCQ Option Shuffling : No Display Question Number : Yes Is Question Mandatory : No

Correct Marks : 4 Wrong Marks : 1

Given below are two statements :

Statement I : A startup's valuation is usually lower during the seed funding stage compared to later stages.

Statement II : Venture capital is typically the first source of funding for most start ups.

In the light of the above statements, choose the correct answer from the options given below :

- (1) Both Statement I and Statement II are true
- (2) Both Statement I and Statement II are false
- (3) Statement I is true but Statement II is false
- (4) Statement I is false but Statement II is true

Options :

531002389. 1

531002390. 2

531002391. 3

531002392. 4

Question Number : 99 Question Id : 531002102 Question Type : MCQ Option Shuffling : No Display Question Number : Yes Is Question Mandatory : No

Correct Marks : 4 Wrong Marks : 1

Match List I with List II :

List I	List II
(A) Revenue model	(I) Startup Nurturing System
(B) Market segmentation	(II) Critical evaluation method
(C) SWOT analysis	(III) Dividing total population in homogeneous groups
(D) Business Incubator	(IV) Return on investment plan

Choose the correct answer from the options given below :

- (1) (A)-(I), (B)-(III), (C)-(II), (D)-(IV)
- (2) (A)-(II), (B)-(III), (C)-(I), (D)-(IV)
- (3) (A)-(II), (B)-(III), (C)-(IV), (D)-(I)
- (4) (A)-(IV), (B)-(III), (C)-(II), (D)-(I)

Options :

531002393. 1

531002394. 2

531002395. 3

531002396. 4

**Question Number : 100 Question Id : 531002103 Question Type : MCQ Option Shuffling : No
Display Question Number : Yes Is Question Mandatory : No
Correct Marks : 4 Wrong Marks : 1**

Financial Institutions are not merely transactional entities but key architects of economic progress. Their roles also span in

- (A) Capital formation
- (B) Risk management
- (C) Inclusive finance
- (D) Arbitration
- (E) Consultation in project report preparation to intern during their internship program.

Choose the correct answer from the options given below :

- (1) (A) and (B) only
- (2) (A), (B) and (C) only
- (3) (B), (C) and (D) only
- (4) (B), (C), (D) and (E) only

Options :

531002397. 1

531002398. 2

531002399. 3

531002400. 4